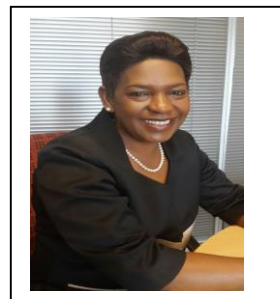


## FOREWORD



Acting HOD  
Ms. N.B. Mutheiwana

It is with great pleasure to share the publication Education Statistics in Limpopo with all our stakeholders. This publication covers 2015 statistics on schools, learners and educators in Ordinary and SNE schooling sectors.

The most important priorities in education is to achieve organizational efficiency and effectiveness by improving monitoring, evaluation and accountability. Thus, the purpose of this publication.

The availability of valid, reliable, comprehensive and up-to-date educational data is a prerequisite for planning, decision-making, monitoring and evaluating an education system at all levels. A state of the art EMIS should be able to meet the information needs of education managers at all levels. The introduction of SA-SAMS (South African Schools and Administration Management System) in schools was initiated with this objective in mind. Almost 99% of our schools use SA-SAMS as their operational system to administer and manage daily school activities. The school records captured by the schools everyday on School Administration System is processed and uploaded to Provincial and National EMIS systems to enable planning, reporting and monitoring.

I am confident that this report will serve as a source of useful information for educators, learners and parents, administrators, managers, decision-makers, analysts and other important role players both at Provincial and National level, and should be used to inform education policy, decision-making, and further research on Education.

The Limpopo Department of Education is committed to making education statistics more accessible and available to the public and we will continue improving our reporting. We trust these will contribute significantly towards the improvement of the system and will also give the public an opportunity to measure the progress made towards achieving the redress and transformation goals of the education system.

The publication would not have been possible without the contribution of governance structures in schools both the SGB's as well as the Centre Governing Bodies (CGB's) in both public and independent institutions. The contribution of the SA-SAMS officials at the Circuits is also much appreciated. The accuracy of our data depends mainly on their pro-active dedication and the Department of Education would not have been able to implement SA-SAMS in our schools without these officials.

On behalf of the department, my words of honor and appreciation are expressed to the principals and their entire School Management Teams (SMT) for their leadership and support, that has brought us this far. To everybody else in the value-chain, a special word of appreciation goes to you as well for the task well executed. This is due to the fact that the department has achieved a 100% return rate from all the institutions (public and independent) in the province during 2015 surveys. Undoubtedly, this is an image we will like to retain and sustain going into the future.

A handwritten signature in black ink, appearing to read 'N.B. Mutheiwana', written in a cursive style.

---

N.B. Mutheiwana  
**Acting HEAD OF DEPARTMENT**

## TABLE OF CONTENTS

1. INTRODUCTION .....	4
2. ABBREVIATIONS and ACRONYMS.....	4
3. ORDINARY SCHOOLS .....	5
3.1 LEARNER AND EDUCATOR INFORMATION.....	5
3.2 Provincial grade enrolment.....	6
3.3 SCHOOL INFORMATION .....	13
4. SPECIAL SCHOOLS	
4.1 SNE SCHOOL, LEARNER AND EDUCATOR INFORMATION .....	15
5. CONTACT DETAILS: Provincial EMIS directorate .....	18
<b>TABLES</b>	
Table 1: Number of learners, educators and schools in the ordinary school sector.....	5
Table 2: Public learner enrolment per grade and district.....	6
Table 3: Independent learner enrolment per grade and district.....	7
Table 4: Learner enrolment per gender, sector and district.....	8
Table 5: Learner enrolment per phase, sector and district.....	9
Table 6: Learner enrolment per population group, sector and district.....	10
Table 7: Teenage pregnancies (both public and independent) per grade and district.....	10
Table 8: Public learner enrolment and number of schools per quintile and district.....	11
Table 9: Gr R attendees per sector and district.....	12
Table 10: Number of ordinary schools per sector and district .....	13
Table 11: Number of ordinary schools per phase and sector.....	14
Table 12: Number of learners, educators and schools in the SNE sector .....	15
Table 13: Number of SNE learners per population group.....	16
Table 14: Provincial SNE grade enrolment per district .....	16
Table 15: SNE male and female comparison .....	16
Table 16: SNE learner enrolment per disability and gender.....	17

**FIGURES**

Figure 1: Public and independent learner enrolment.....5

Figure 2: Public and independent learner: educator ratio.....5

Figure 3: Number of public learners per grade.....6

Figure 4: Public learner enrolment per district.....6

Figure 5: Number of independent learners per grade.....7

Figure 6: Public and independent learner enrolment per grade as provincial percentage.....7

Figure 7: Public male and female comparison per district.....8

Figure 8: Independent male and female comparison per district.....8

Figure 9: Overall learner enrolment per phase.....9

Figure 10: Public learner enrolment per phase.....9

Figure 11: Public learner enrolment per quintile.....11

Figure 12: Number of public schools per quintile (as percentage).....11

Figure 13: Gr R attendees per district.....12

Figure 14: Number of public schools per phase.....13

Figure 15: Number of independent schools per phase.....13

Figure 16: Number of schools per sector.....14

Figure 17: Overall number of schools per phase and district.....14

Figure 18: Number of public schools per quintile.....14

Figure 19: Number of SNE schools per district.....15

Figure 20: Number of SNE learners and educators per district.....15

Figure 21: SNE male and female comparison ... ..17

Figure 22: SNE learner enrolment per disability.....17

## 1. INTRODUCTION

This publication give an account on learner enrolment, school and educator statistics from Ordinary and SNE (Special Need Education) schooling sectors both Public and Independent. The Ordinary schools' annual survey (ASS) is conducted on the first Tuesday in March and the SNE annual in September every year as designated in the National Education Information Policy. (Gazette 26710, 2004)

Almost 99% of the information provided in this publication is extracted from SA-SAMS ( South African School Administration and Management System) used by the schools for school administration , management and governance .

It is also important to note that the data in this publication is presented according to the 2012 district demarcations consisting of 10 Districts

## 2. ABBREVIATIONS and ACRONYMS

### Districts:

LEB	Lebowakgomo
MOG	Mogalakwena
MOP	Mopani
POL	Polokwane
RIB	Riba Cross
SEK	Sekhukhune
TSH	Tshipise-Sagole
TZA	Tzaneen
VHE	Vhembe
WAT	Waterberg

### General:

EMIS	Education Management Information System
Enr	Enrolment
Gr	Grade
Gr R	Reception year, or year prior to Grade 1
Gr R attendees	Learners with pre-school education
Indep	Independent
Pre-Gr R	Year before Gr R
Publ	Public
SA-SAMS	South African Schools' Administration and Management System
SNE	Special Needs Education

### School Phases:

COMB	Combined
INT	Intermediate
PRIM	Primary
SEC	Secondary

### 3. ORDINARY SCHOOLS (both public and independent)

#### 3.1 LEARNER AND EDUCATOR INFORMATION

Table 1: Number of learners, educators and schools in the ordinary schooling sector, by district, in 2015

District	Ordinary Public Schools			Ordinary Independent Schools			Ordinary Public and Independent Schools		
	Schools	Learners	Educators	Schools	Learners	Educators	Schools	As % of Provincial Total	Learners
LEBOWAKGOMO	242	94813	3006	3	1506	63	245	6.1	96319
MOGALAKWENA	262	94772	3079	9	2849	148	271	6.7	97621
MOPANI	469	242792	7461	16	6069	305	485	12.0	248861
POLOKWANE	667	281958	8938	26	13637	572	693	17.1	295595
RIBA CROSS	255	99158	2973	8	3519	132	263	6.5	102677
SEKHUKHUNE	654	269844	8531	17	6653	298	671	16.6	276497
TSHIPISE-SAGOLE	216	73480	2334	5	2607	80	221	5.5	76087
TZANEEN	219	100998	3371	12	4054	221	231	5.7	105052
VHEMBE	731	342664	10783	47	17072	748	778	19.3	359736
WATERBERG	175	80775	2506	8	702	80	183	4.5	81477
<b>Provincial</b>	<b>3890</b>	<b>1681254</b>	<b>52982</b>	<b>151</b>	<b>58668</b>	<b>2647</b>	<b>4041</b>	<b>100.0</b>	<b>1739922</b>

Table 1 reflects how many ordinary public and independent schools per district in 2015 and how many learners and educators were in each district. 3.4 % of the overall provincial learner enrolment attends independent schools and 3.7 % of all ordinary schools in Limpopo are independent. The overall provincial learner enrolment increased with 24531 (1.4 %) as compared to 2014 enrolment.

Figure 1: Public and independent learner enrolment in Limpopo

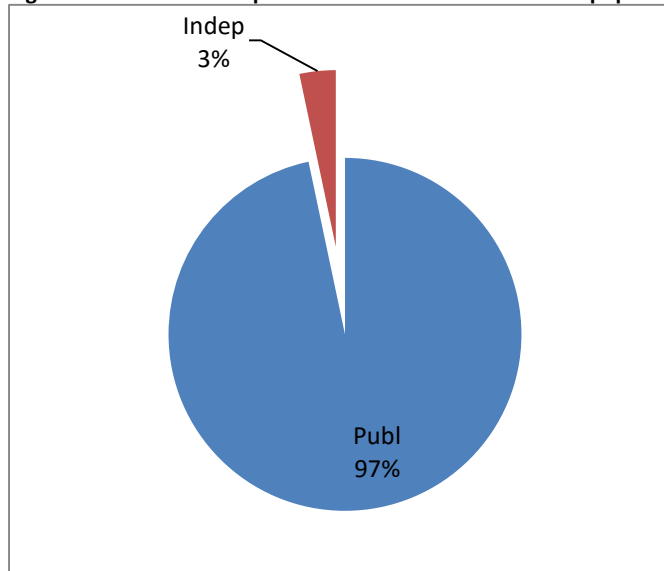


Figure 1 reflects that 97% of learners in Limpopo are in the public schooling sector (the same as in 2014)

Figure 2: Public and independent learner: educator ratio

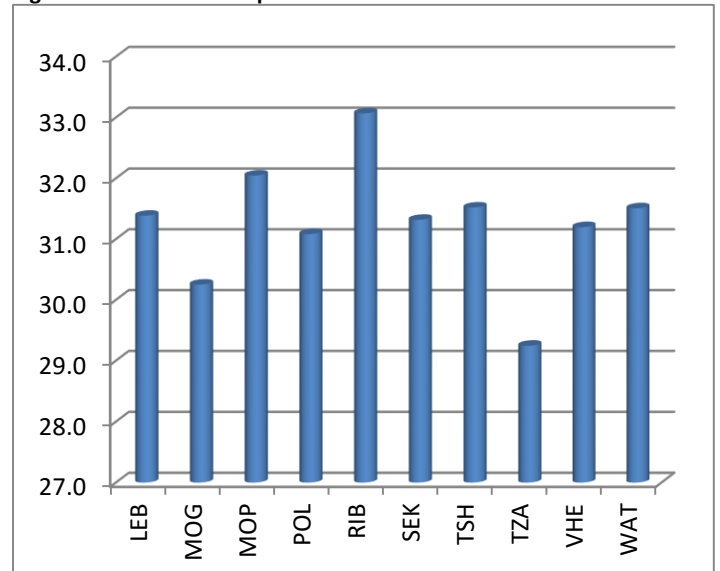


Figure 2 reflects that the learner: educator ratio in Riba Cross is the highest, whilst in the Tzaneen district the ratio is 30:1 (slightly higher than in 2014 when it was 28:1)

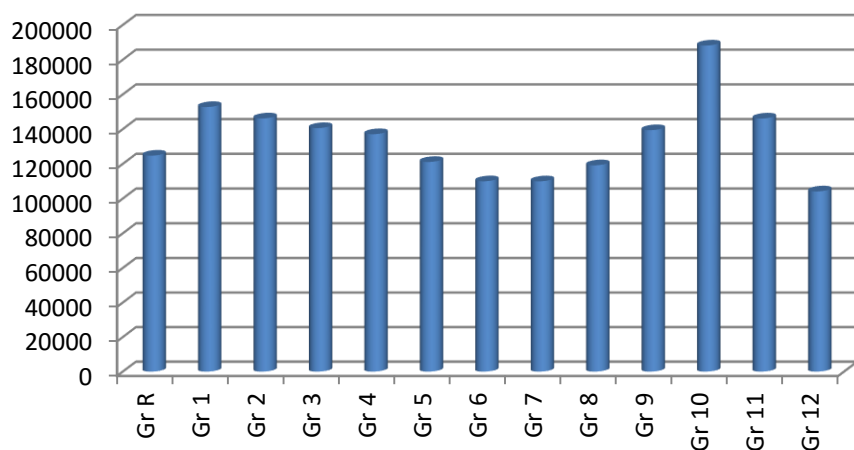
### 3.2 LEARNER ENROLMENT PER GRADE

**Table 2: Public learner Inrolment per grade and district:**

District	Pre Gr	Gr R	Gr 1	Gr 2	Gr 3	Gr 4	Gr 5	Gr 6	Gr 7	Gr 8	Gr 9	Gr 10	Gr 11	Gr 12	Othe	TOTAL
LEB	0	6543	8491	8185	7803	7753	6902	5972	5719	6034	7407	10021	7840	6143	0	94813
MOG	0	6919	8035	7912	7699	7552	6597	6003	6056	6347	7324	10455	8092	5781	0	94772
MOP	76	1845	22301	20934	19831	19532	16937	15172	15612	16428	19915	26799	18150	12648	0	242792
POL	0	1982	23222	22449	22430	21987	19712	17592	17504	19967	23287	30190	25425	18365	0	281958
RIB	0	7275	8693	8743	8320	7941	6759	6083	6083	6182	7533	11199	8554	5793	0	99158
SEK	117	1977	24158	22981	21852	21464	18878	17073	16763	17589	20326	30060	23104	15706	0	269844
TSH	0	4900	6410	5836	5635	5895	5004	4665	4821	5866	6141	8181	5757	4369	0	73480
TZA	0	7540	8903	8553	7997	7461	6852	6214	6278	6723	8451	10881	9027	6118	0	100998
VHE	124	2350	28565	27520	26506	25650	22890	21456	21536	24511	28868	39307	30873	21342	7	342664
WAT	147	5575	7762	7420	7393	7041	6267	5917	5761	5524	5998	6829	5324	3807	10	80775
<b>Prov</b>	<b>464</b>	<b>1203</b>	<b>146540</b>	<b>140533</b>	<b>135466</b>	<b>13227</b>	<b>116798</b>	<b>106147</b>	<b>106133</b>	<b>115171</b>	<b>135250</b>	<b>183922</b>	<b>142146</b>	<b>100072</b>	<b>17</b>	<b>1681254</b>

Table 2 shows that in the public sector, the learner enrolment decreases from Grade 10 to Grade 12 in public schools with 5 %.

**Figure 3: Numbers of public learners per grade**



In figure 3 it can be seen that the Gr 12 learner enrolment is less than all other grades

**Figure 4: Public learners per district**

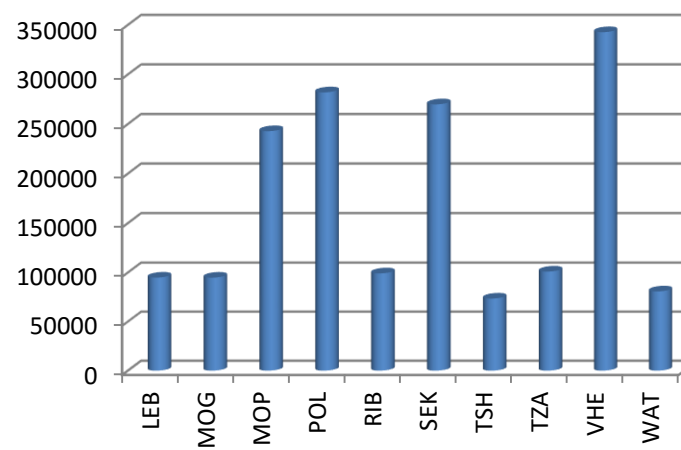


Figure 4 reflects that 20.4% of the total public learner enrolment in Limpopo is in the Vhembe district whilst only 4.4 % of public learners are in the Tshipise-Sagole district.

**Table 3: Independent learner enrolment per grade and district:**

District	Pre-Gr R	Gr R	Gr 1	Gr 2	Gr 3	Gr 4	Gr 5	Gr 6	Gr 7	Gr 8	Gr 9	Gr 10	Gr 11	Gr 12	TOTAL
LEB	0	48	168	142	131	125	99	118	99	114	113	138	117	94	1506
MOG	68	228	322	276	247	223	164	172	149	170	141	241	230	218	2849
MOP	91	428	505	438	498	473	373	354	334	530	488	465	502	590	6069
POL	185	741	1294	1264	1091	1107	963	867	892	1005	1190	1101	1011	926	13637
RIB	3	177	235	287	238	248	246	205	177	290	365	413	313	322	3519
SEK	79	394	481	481	517	476	526	446	465	570	617	625	603	373	6653
TSH	35	143	499	296	271	231	223	191	168	155	124	126	72	73	2607
TZA	70	449	453	369	308	269	231	189	208	323	326	322	278	259	4054
VHE	347	1617	2043	1906	1679	1512	1333	1118	1168	796	754	786	827	1186	17072
WAT	43	82	87	87	63	66	60	62	40	35	28	12	19	18	702
<b>Provincial</b>	<b>921</b>	<b>4307</b>	<b>6087</b>	<b>5546</b>	<b>5043</b>	<b>4730</b>	<b>4218</b>	<b>3722</b>	<b>3700</b>	<b>3988</b>	<b>4146</b>	<b>4229</b>	<b>3972</b>	<b>4059</b>	<b>58668</b>

**Figure 5: Number of independent learners per grade**

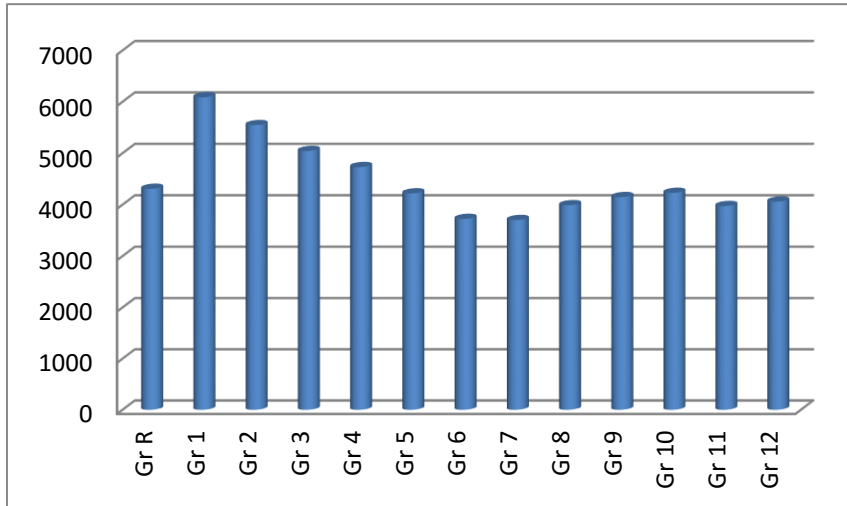


Figure 5 reflects that there are more learners from Grade 1 to Grade 6 than from Grade 7 to 10

**Figure 6: Public and independent learner enrolment per grade as provincial percentage**

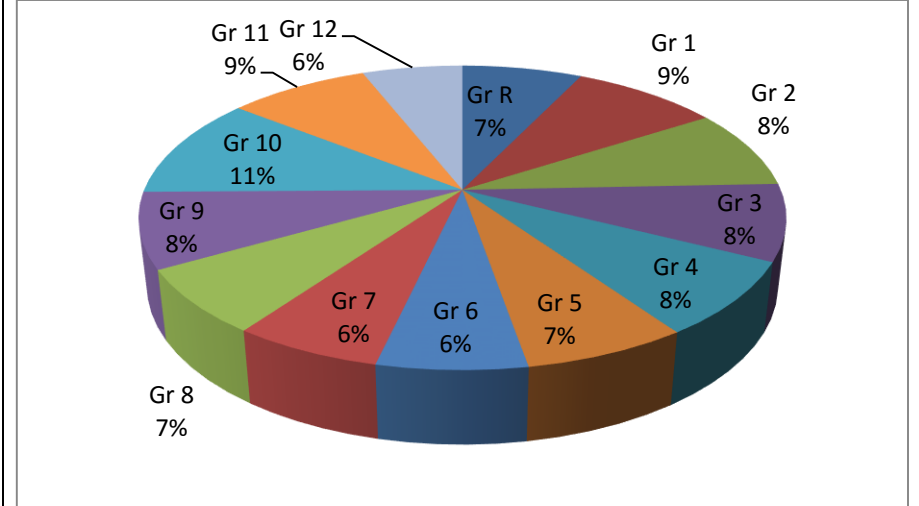


Figure 6 reflects that the highest percentage of independent learners is in Grade 10 (11%) whilst the lowest percentage is in Grade 6, 7 and 12 (6%)

**Table 4: Learner enrolment per gender, sector and district**

District	Independent		Public		TOTAL	
	Female	Male	Female	Male	Female	Male
LEBOWAKGOMO	821	685	46777	48036	47598	48721
MOGALAKWENA	1414	1435	46548	48224	47962	49659
MOPANI	3047	3022	119866	122926	122913	125948
POLOKWANE	6947	6690	138410	143548	145357	150238
RIBA CROSS	1890	1629	48582	50576	50472	52205
SEKHUKHUNE	3334	3319	131998	137846	135332	141165
TSHIPISE-SAGOLE	1251	1356	35984	37496	37235	38852
TZANEEN	2104	1950	50128	50870	52232	52820
VHEMBE	8716	8356	168192	174472	176908	182828
WATERBERG	325	377	40208	40567	40533	40944
<b>Provincial</b>	<b>29147</b>	<b>27722</b>	<b>826693</b>	<b>854561</b>	<b>856542</b>	<b>883380</b>

Table 4 reflects that there are slightly more male than female learners in all districts (see table 4 and figure 7) Provincially 50.77% of learners in ordinary schools are male and 49.2% are female. Table 4 reflects that there are more female than male learners in the Independent Sector of most districts. Vhembe has the highest learner enrolment (20.7 %) followed by Polokwane with 17 % of the total (public and independent) learner enrolment in Limpopo (see table 4 and figure 6)

**Figure 7: Public male and female comparison per district**

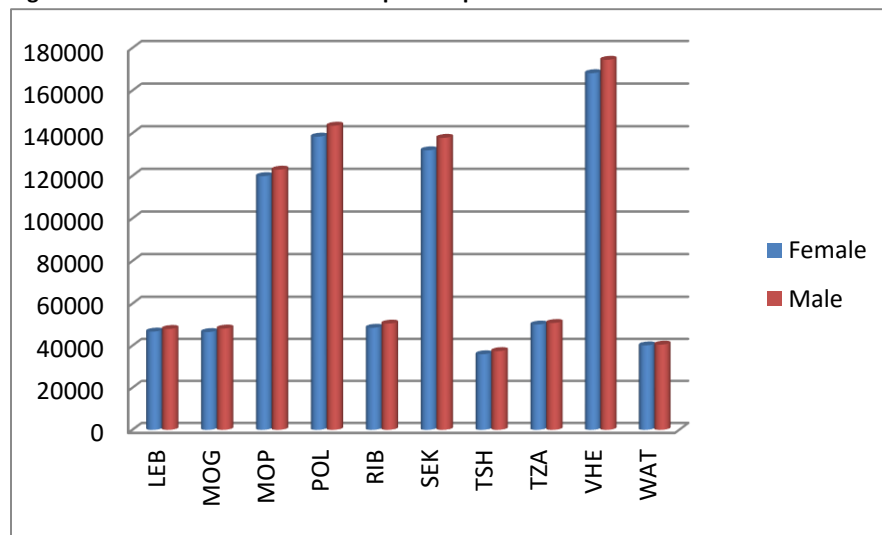


Figure 7 reflects that the male learners in public schools are more than female learners in all districts of Limpopo

**Figure 8: Independent male and female comparison per district**

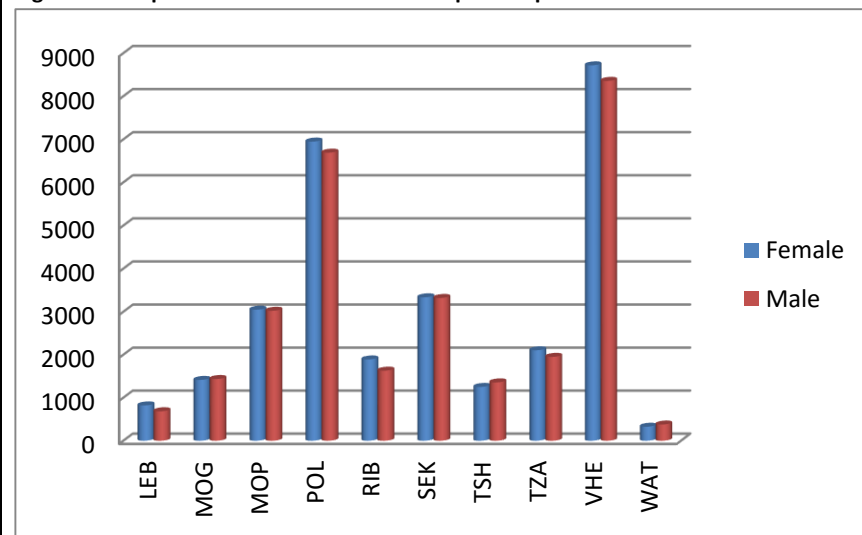


Figure 8 reflects that there are more female than male learners in the independent schooling sector in most districts in Limpopo.



**Table 5: Learner enrolment per phase, sector and district:**

District	COMBINED		INTERMEDIATE		PRIMARY		SECONDARY		TOTAL	
	Public	Indep	Public	Indep	Public	Indep	Public	Indep	Public	Indep
LEBOWAKGOMO	912	1506	0	0	56719	0	37182	0	94813	1506
MOGALAKWENA	637	1617	0	0	56490	943	37645	289	94772	2849
MOPANI	1071	5832	986	0	147949	93	92786	144	242792	6069
POLOKWANE	4097	6281	0	0	162435	4013	115426	3343	281958	13637
RIBA CROSS	0	3408	0	0	59897	111	39261	0	99158	3519
SEKHUKHUNE	16152	5774	2753	0	150271	544	100668	335	269844	6653
TSHIPISE-SAGOLE	1142	2065	0	0	42658	542	29680	0	73480	2607
TZANEEN	1480	2161	0	0	58810	1448	40708	445	100998	4054
VHEMBE	6271	11558	0	0	193877	5035	142516	479	342664	17072
WATERBERG	2838	583	78	0	51850	119	26009	0	80775	702
<b>Provincial</b>	<b>34600</b>	<b>40785</b>	<b>3817</b>	<b>0</b>	<b>980956</b>	<b>12848</b>	<b>661881</b>	<b>5035</b>	<b>1681254</b>	<b>58668</b>

Table 5 reflects that 56.4 % of all learners in Limpopo are attending public primary schools and most primary school learners (public as well as independent) are in the Vhembe district.

**Figure 9: Overall learner enrolment per phase**

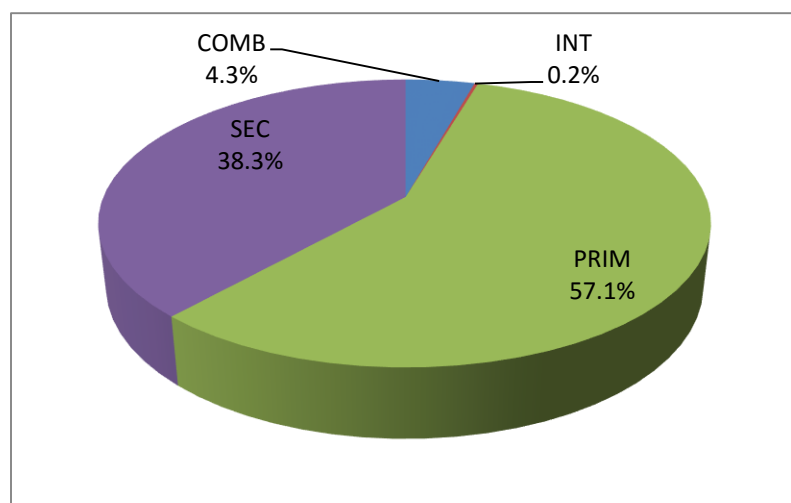


Figure 9 reflects that most learners (57.1 %) of public and independent learners are attending primary schools in Limpopo. The overall number of learners attending combined schools increased from 4 % to 4.3 % since 2014.

**Figure 10: Public learner enrolment per phase**

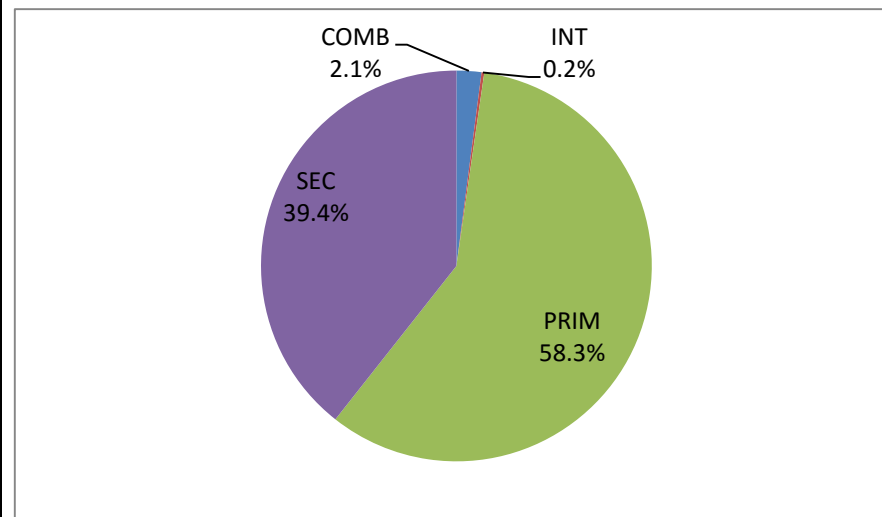


Figure 10 shows that 58.3 % of learners in the public schooling sector are attending primary schools in Limpopo. The percentages of learners per phase remain the same since 2014.

**Table 6: Learner enrolment per population group, sector and district:**

District	African		Coloured		Indian		Other		White		TOTAL	
	Public	Indep	Public	Indep	Public	Indep	Public	Indep	Public	Indep	Public	Indep
LEBOWAKGOMO	94767	1501	5	1	22	2	13	2	6	0	94813	1506
MOGALAKWENA	93309	2418	46	10	131	192	28	7	1258	222	94772	2849
MOPANI	240788	5598	72	27	106	150	20	2	1806	292	242792	6069
POLOKWANE	276164	12317	1030	126	414	485	85	53	4265	656	281958	13637
RIBA CROSS	98718	3371	65	16	64	56	18	36	293	40	99158	3519
SEKHUKHUNE	268460	6333	55	9	113	16	40	2	1176	293	269844	6653
TSHIPISE-SAGOLE	73015	2585	23	5	64	11	9	1	369	5	73480	2607
TZANEEN	98634	3626	91	21	219	73	50	6	2004	328	100998	4054
VHEMBE	340681	16412	130	16	743	273	78	11	1032	360	342664	17072
WATERBERG	74111	304	279	4	156	1	64	3	6165	390	80775	702
<b>Provincial</b>	<b>1658647</b>	<b>54465</b>	<b>1796</b>	<b>235</b>	<b>2032</b>	<b>1259</b>	<b>405</b>	<b>123</b>	<b>18374</b>	<b>2586</b>	<b>1681254</b>	<b>58668</b>

Table 6 reflects that most public learners that belong to the white population are located in the Waterberg district. It also reflects that 98.5 % of the total learner enrolment in Limpopo belongs to the African population.

**Table 7: Teenage pregnancies (both public and independent) per grade and district:**

District	Gr 6	Gr 7	Gr 8	Gr 9	Gr 10	Gr 11	Gr 12	Total
LEBOWAKGOMO	0	0	1	10	36	24	30	101
MOGALAKWENA	0	1	0	0	1	1	3	6
MOPANI	1	3	5	20	34	31	17	111
POLOKWANE	0	1	5	27	58	38	36	165
RIBA CROSS	0	0	0	0	0	1	2	3
SEKHUKHUNE	1	1	1	7	15	14	14	53
TSHIPISE-SAGOLE	0	0	0	2	14	5	3	24
TZANEEN	0	0	0	0	5	8	5	18
VHEMBE	2	1	20	78	144	90	69	404
WATERBERG	0	2	2	4	1	4	10	23
<b>Provincial</b>	<b>4</b>	<b>9</b>	<b>34</b>	<b>148</b>	<b>308</b>	<b>216</b>	<b>189</b>	<b>908</b>

Table 7 reflects that 33.6 % of female learners that fell pregnant in 2014 were in grade 10. It also reflects that 44.5 % of the female that fell pregnant were in the Vhembe district.

**Table 8: Public learner enrolment and number of schools per quintile and district:**

District	Quintile 1		Quintile 2		Quintile 3		Quintile 4		Quintile 5		TOTAL	
	Learners	#Schools	Learners	#Schools	Learners	#Schools	Learners	#Schools	Learners	#Schools	Learners	#Schools
LEBOWAKGOMO	31539	95	50533	124	11370	21	1008	1	363	1	94813	242
MOGALAKWENA	13347	57	67428	182	8450	16	579	1	4968	6	94772	262
MOPANI	106974	231	52823	105	77702	123	2084	5	3209	5	242792	469
POLOKWANE	40899	133	116235	322	107225	192	4082	5	13517	15	281958	667
RIBA CROSS	82217	217	14896	33	1066	2	491	2	488	1	99158	255
SEKHUKHUNE	193994	503	66485	136	3546	5	2115	5	3704	5	269844	654
TSHIPISE-SAGOLE	11850	47	47985	146	12614	21	0	0	1031	2	73480	216
TZANEEN	57016	150	3270	7	35944	56	677	1	4091	5	100998	219
VHEMBE	33390	78	215784	492	82657	151	7416	6	3417	4	342664	731
WATERBERG	16630	54	31969	78	19370	17	572	3	12234	23	80775	175
<b>Provincial</b>	<b>587856</b>	<b>1565</b>	<b>667408</b>	<b>1625</b>	<b>359944</b>	<b>604</b>	<b>19024</b>	<b>29</b>	<b>47022</b>	<b>67</b>	<b>1681254</b>	<b>3890</b>

Table 8 reflects that most learners attend schools that are in quintile 2. Provincially 96.1 % of learners are attending no-fee public schools (quintile 1, 2 and 3) Only 3.9 % of learners in public schools in Limpopo, pay school fees.

**Figure 11: Public learner enrolment per quintile**

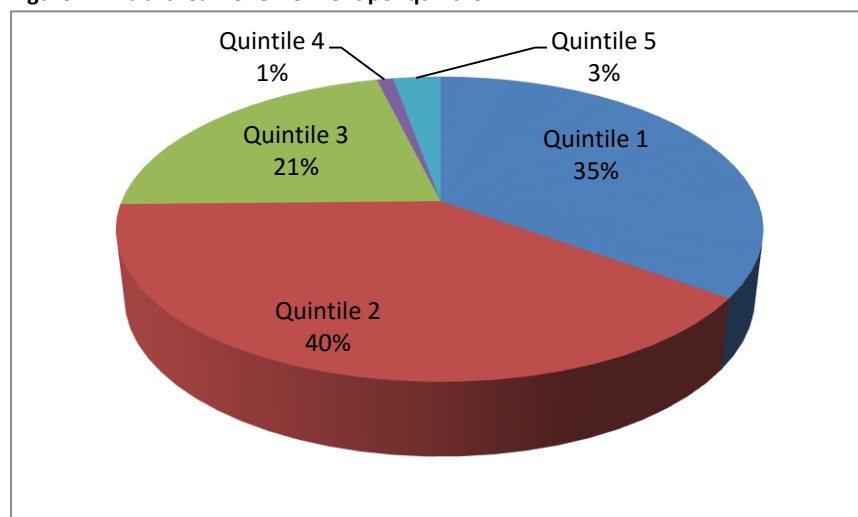


Figure 11 reflects that 40% of learners attending public schools in Limpopo are in quintile 2 and only 1% of schools are in Quintile 4. These percentages did not change since 2014.

**Figure 12: Number of public schools per quintile**

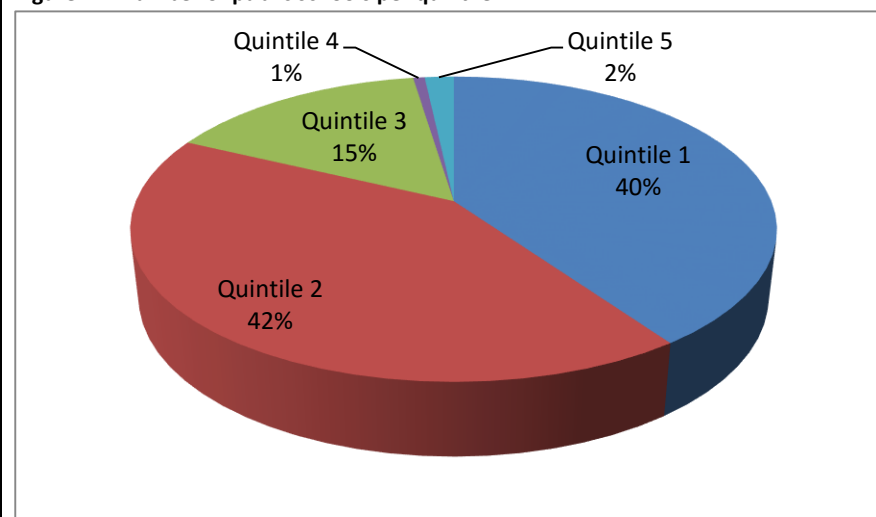
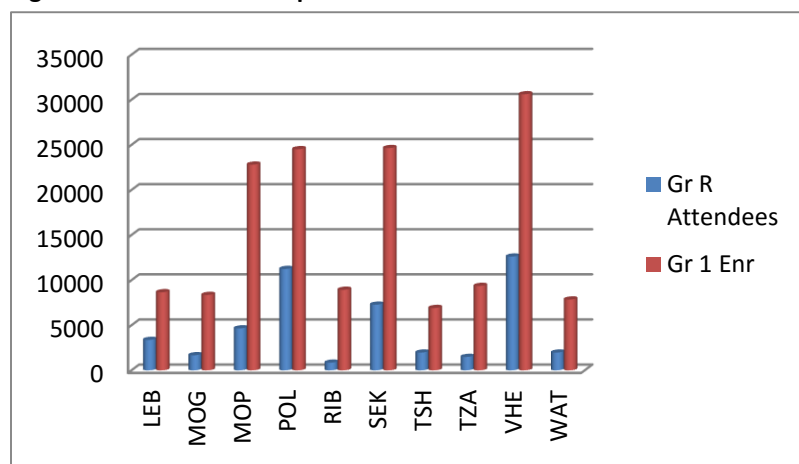


Figure 12 reflects that 97 % of public schools in Limpopo are no-fee schools (quintile 1, 2 and 3) and only 3% of public schools are in quintile 4 and 5. No changes observed.

**Table 9: Gr R attendees per sector and district:**

District	Independent			Public			TOTAL		
	Gr R attendees	Gr 1 Enr	% Learners that attended Gr R	Gr R attendees	Gr 1 Enr	% Learners that attended Gr R	Gr R attendees	Gr 1 Enr	% Learners that attended Gr R
LEBOWAKGOMO	101	168	60.1	3269	8491	38.5	3370	8659	38.9
MOGALAKWENA	80	322	24.8	1589	8035	19.8	1669	8357	20.0
MOPANI	234	505	46.3	4415	22301	19.8	4649	22806	20.4
POLOKWANE	687	1294	53.1	10549	23222	45.4	11236	24516	45.8
RIBA CROSS	32	235	13.6	813	8693	9.4	845	8928	9.5
SEKHUKHUNE	148	481	30.8	7128	24158	29.5	7276	24639	29.5
TSHIPISE-SAGOLE	14	499	2.8	1953	6410	30.5	1967	6909	28.5
TZANEEN	174	453	38.4	1309	8903	14.7	1483	9356	15.9
VHEMBE	880	2043	43.1	11729	28565	41.1	12609	30608	41.2
WATERBERG	36	87	41.4	1931	7762	24.9	1967	7849	25.1
<b>Provincial</b>	<b>2386</b>	<b>6087</b>	<b>39.2</b>	<b>44685</b>	<b>146540</b>	<b>30.5</b>	<b>47071</b>	<b>152627</b>	<b>30.8</b>

**Figure 13: Gr R attendees per district:**



In table 9 and figure 13 it is reflected that Vhembe has the highest Gr 1 enrolment as well as the highest Gr R attendees. (Public as well as independent) 19.5 % of public Gr 1 learners in Limpopo are located in Vhembe of which 41.1 % has attended Gr R.

The highest percentage of independent (53.1 %) as well as public (45.4 %) Gr R attendees are in the Polokwane district of Limpopo.

Provincially, only 30.8 % of Gr 1 learners have attended Gr R. (public as well as independent)

Provincially, only 30.5 % of public Gr 1 learners have attended Gr R.

### 3.3. SCHOOL INFORMATION

**Table 10: Number of ordinary schools per phase, sector and district:**

District	COMBINED		INTERMEDIATE		PRIMARY		SECONDARY		TOTAL	
	Indep	Public	Indep	Public	Indep	Public	Indep	Public	Indep	Public
LEBOWAKGOMO	3	4	0	0	0	138	0	100	3	242
MOGALAKWENA	5	6	0	0	3	157	1	99	9	262
MOPANI	13	3	0	6	1	290	2	170	16	469
POLOKWANE	14	4	0	0	10	408	2	255	26	667
RIBA CROSS	6	0	0	0	2	163	0	92	8	255
SEKHUKHUNE	14	28	0	8	2	384	1	234	17	654
TSHIPISE-SAGOLE	3	4	0	0	2	159	0	53	5	216
TZANEEN	4	6	0	0	6	138	2	75	12	219
VHEMBE	30	6	0	0	15	498	2	227	47	731
WATERBERG	7	9	0	1	1	116	0	49	8	175
<b>Provincial</b>	<b>99</b>	<b>70</b>	<b>0</b>	<b>15</b>	<b>42</b>	<b>2451</b>	<b>10</b>	<b>1354</b>	<b>151</b>	<b>3890</b>

Table 9 reflects that Sekhukhune has the most combined and intermediate public schools, Vhembe has the most public primary schools and Polokwane has the most public secondary schools in Limpopo. 18.8 % of public schools in Limpopo are in the Vhembe district of Limpopo.

**Figure 14: Number of public schools per phase**

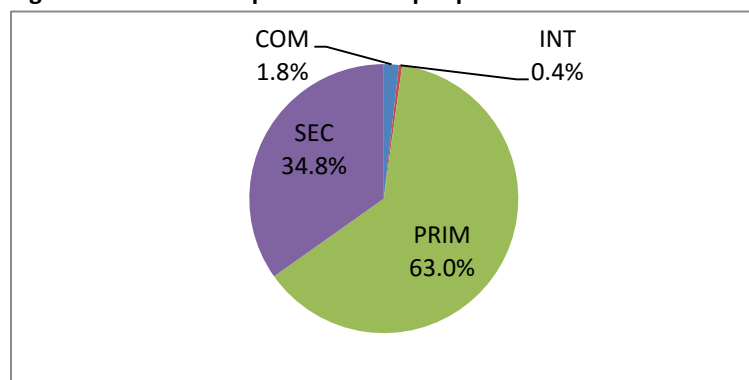


Figure 13 reflects that 63% of public schools are primary schools.

**Figure 15: Number of independent schools per phase**

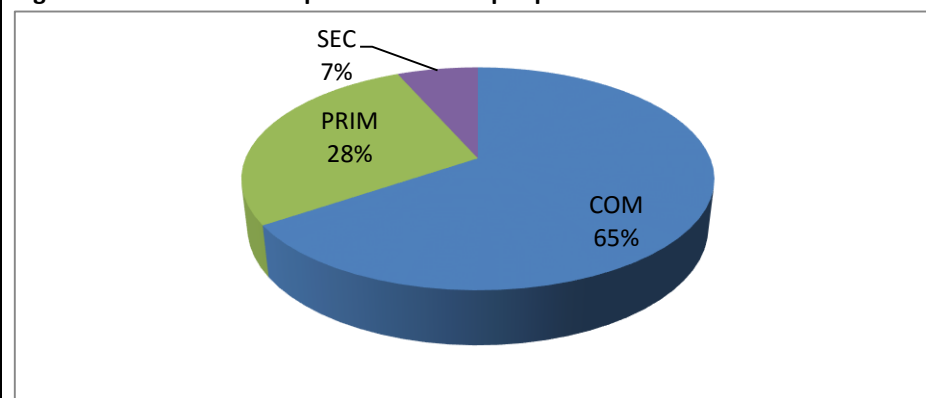


Figure 14 reflects that 65% of independent schools are combined schools. There was a decline of 2 % since 2014.

**Table 11: Number of ordinary schools per phase and sector:**

Phase	Public	Independent
COM	70	99
INT	15	0
PRIM	2451	42
SEC	1354	10
<b>Total</b>	<b>3890</b>	<b>151</b>

Table 10 reflects that 61.7 % of ordinary public schools in Limpopo are primary schools (see table 10 and figure 12) 65.6 % of independent schools are combined schools and only 6.6 % are secondary schools whilst 34.8 % of public schools are secondary schools (see table 10 and figure 14)

**Figure 16: Number of schools per sector as percentage**

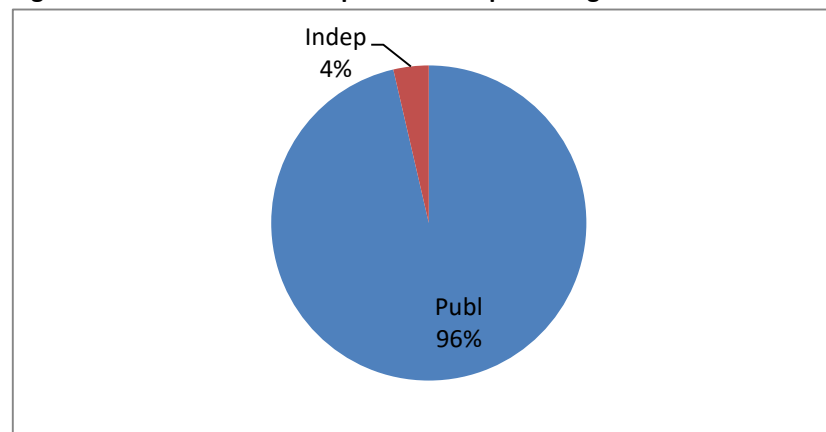


Figure 15 indicates that 96 % of ordinary schools in Limpopo are in the public sector.

**Figure 17: Overall number of schools per phase and district**

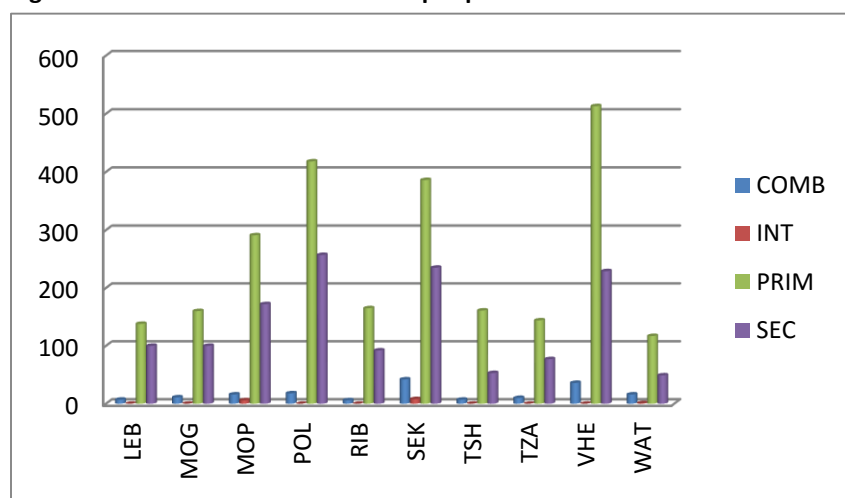
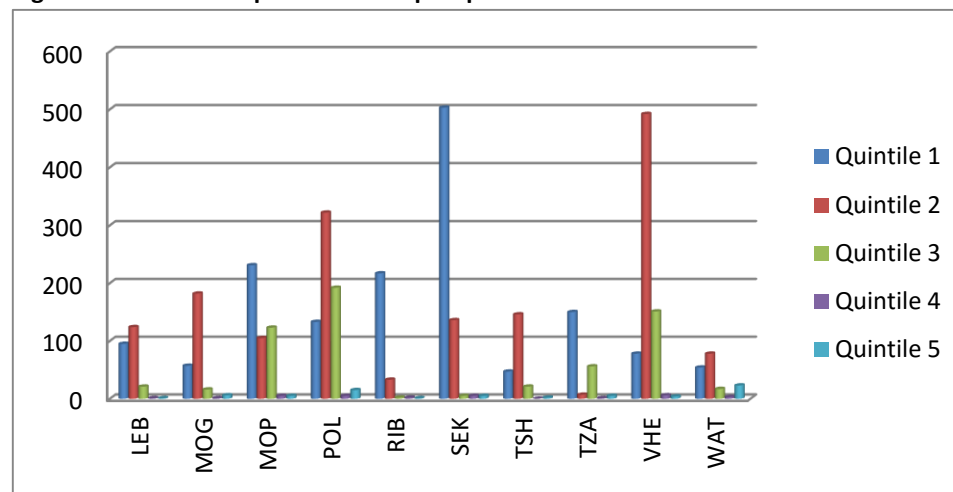


Figure 16 reflects that most primary schools are in the Vhembe district whilst most secondary schools are in the Polokwane district. Sekhukhune has the most intermediate schools in Limpopo. (see table 9 and figure 16)

**Figure 18: Number of public schools per quintile**



In Figure 17 it is observed that most schools are in quintile 1 or 2 in all districts. Quintile 1 schools are the poorest whilst quintile 5 schools are the least poor. 3.9 % of public ordinary schools in Limpopo are in quintile 4 and 5 (fee schools) provincially 96.1 % of public schools are no-fee schools (quintile 1, 2 and 3)

## 4. SPECIAL SCHOOLS

### 4.1 SNE LEARNER, EDUCATOR AND SCHOOL INFORMATION

**Table 12: Number of learners, educators and schools in the SNE sector, by district, in 2015**

District	SNE Schools					
	Learners	As % of Provincial Total	Educators	As % of Provincial Total	Schools	As % of Provincial Total
LEBOWAKGOMO	842	9.9	72	10.3	3	8.6
MOGALAKWENA	38	0.4	2	0.3	1	2.9
MOPANI	616	7.2	44	6.3	2	5.7
POLOKWANE	3088	36.2	255	36.6	11	31.4
SEKHUKHUNE	967	11.3	79	11.4	6	17.1
TZANEEN	386	4.5	44	6.3	2	5.7
VHEMBE	1878	22.0	129	18.5	6	17.1
WATERBERG	726	8.5	71	10.2	4	11.4
<b>Provincial</b>	<b>8541</b>	<b>100.0</b>	<b>696</b>	<b>100.0</b>	<b>35</b>	<b>100.0</b>

Table 11 shows how many public SNE schools there were per district in 2015 and how many learners and educators there were in each. In 2015, there were 150 more learners in special schools in Limpopo than in 2014 (8391). Provincially, more than a third (36.6 %) of SNE learners, educators and schools are in the Polokwane district.

**Figure 19: Number of SNE schools per district:**

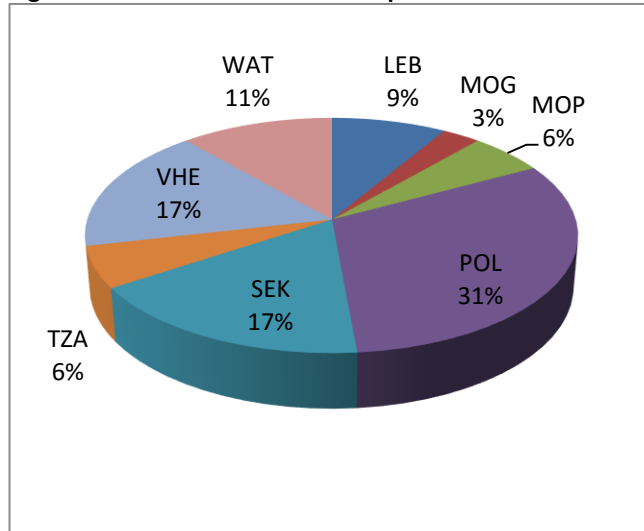


Figure 17 reflects that most SNE schools are located in the Polokwane district and there are no SNE schools in the Riba Cross and Tshipise-Sagole districts of Limpopo. SNE learners in Waterberg have increased with 2 %

**Figure 20: Number of SNE learners and educators per district:**

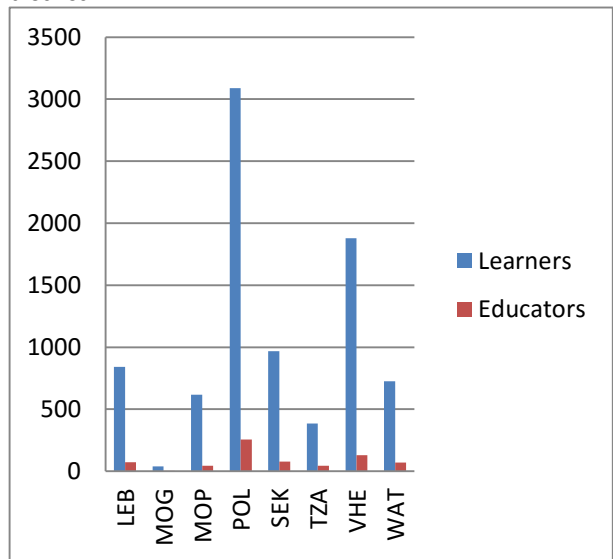


Figure 9 reflects that the highest number of SNE learners and educators are in the Polokwane and Vhembe districts of Limpopo

**Table 13: Provincial SNE grade enrolment per district**

DISTRICT	Pre-Gr R	Gr R	Gr 1	Gr 2	Gr 3	Gr 4	Gr 5	Gr 6	Gr 7	Gr 8	Gr 9	Gr 10	Gr 11	Gr 12	Pre-Voc	Special	Total
LEBOWAKGOMO	0	9	31	41	57	85	94	80	65	0	0	0	0	0	364	16	842
MOGALAKWENA	0	0	38	0	0	0	0	0	0	0	0	0	0	0	0	0	38
MOPANI	0	32	29	23	29	28	0	0	0	0	0	0	0	0	0	475	616
POLOKWANE	0	266	260	191	299	97	26	213	178	221	198	89	110	41	37	862	3088
SEKHUKHUNE	184	127	121	176	161	50	26	33	29	0	0	0	0	0	60	0	967
TZANEEN	0	67	69	64	49	40	38	29	30	0	0	0	0	0	0	0	386
VHEMBE	0	75	84	81	77	76	65	184	73	16	15	17	10	2	0	1103	1878
WATERBERG	0	28	61	50	59	63	76	90	101	87	55	56	0	0	0	0	726
<b>Provincial</b>	<b>184</b>	<b>604</b>	<b>693</b>	<b>626</b>	<b>731</b>	<b>439</b>	<b>325</b>	<b>629</b>	<b>476</b>	<b>324</b>	<b>268</b>	<b>162</b>	<b>120</b>	<b>43</b>	<b>461</b>	<b>2456</b>	<b>8541</b>

28.8 % of SNE learners in Limpopo are in a special grade for SNE schools. This increased with 4.9 % as a result of more learners enrolled in the special grade. Excluding the special grade, most SNE learners are in Gr 3.

**Table 14: Number of SNE learners per population group**

DISTRICT	African	Coloured	Indian	Other	White
LEBOWAKGOMO	842	0	0	0	0
MOGALAKWENA	38	0	0	0	0
MOPANI	616	0	0	0	0
POLOKWANE	2963	28	4	1	92
SEKHUKHUNE	967	0	0	0	0
TZANEEN	386	0	0	0	0
VHEMBE	1878	0	0	0	0
WATERBERG	610	10	0	0	106
<b>Provincial</b>	<b>8300</b>	<b>38</b>	<b>4</b>	<b>1</b>	<b>198</b>

Table 13 reflects that 97.2% of SNE learners in Limpopo are from the African population group

**Table 15: SNE male and female comparison**

District	Female	Male	Total
LEBOWAKGOMO	286	556	842
MOGALAKWENA	18	20	38
MOPANI	234	382	616
POLOKWANE	1087	2001	3088
SEKHUKHUNE	372	595	967
TZANEEN	168	218	386
VHEMBE	699	1179	1878
WATERBERG	218	508	726
<b>Provincial</b>	<b>3082</b>	<b>5459</b>	<b>8541</b>

Table 14 reflects that the Polokwane district has the highest number of male and female SNE learners. The male learners are more than the female learners in all districts. Provincially, 63.9% of SNE learners are male. (0.7 % more than in 2014)



**Figure 21: SNE male and female comparison per district**

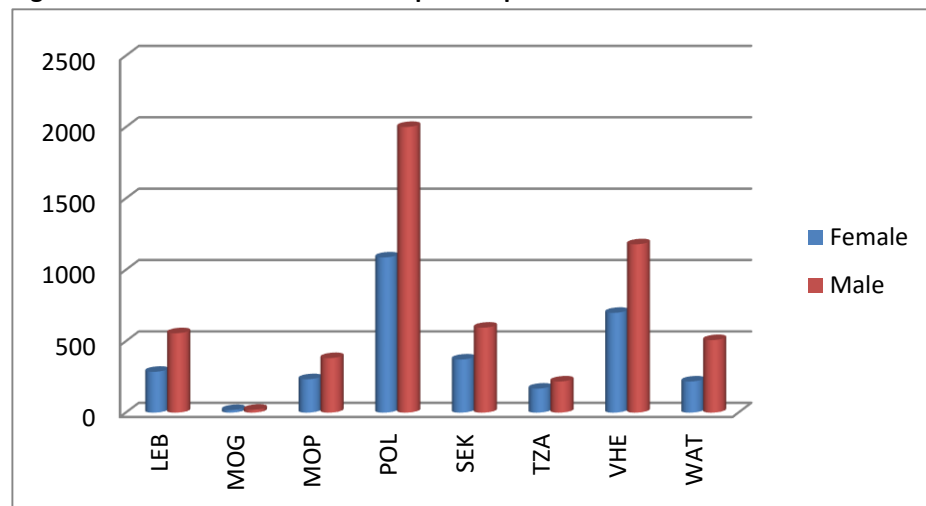


Figure 20 clearly reflects that SNE male learners are more than the female learners in all districts in Limpopo. There are no SNE learners the in Riba Cross and Tshipise-Sagole districts.

**Table 16: SNE Learner Enrolment per Disability and Gender**

Disability	Enrolment
Attention deficit	163
Autistic Spectrum	276
Behavioural disorder	228
Blindness	243
Cerebral Palsy	539
Deaf-Blindness	6
Deafness	536
Epilepsy	326
Hard of Hearing	191
Mild to Mod Intel disab	2528
Multiple Disabled	261
Partial Sighted	325
Physical disability	301
Psychiatric disorder	42
Severe intellectual disab	2084
Specific learning disab	492
<b>Provincial</b>	<b>8541</b>

**Figure 22: SNE learner enrolment per disability**

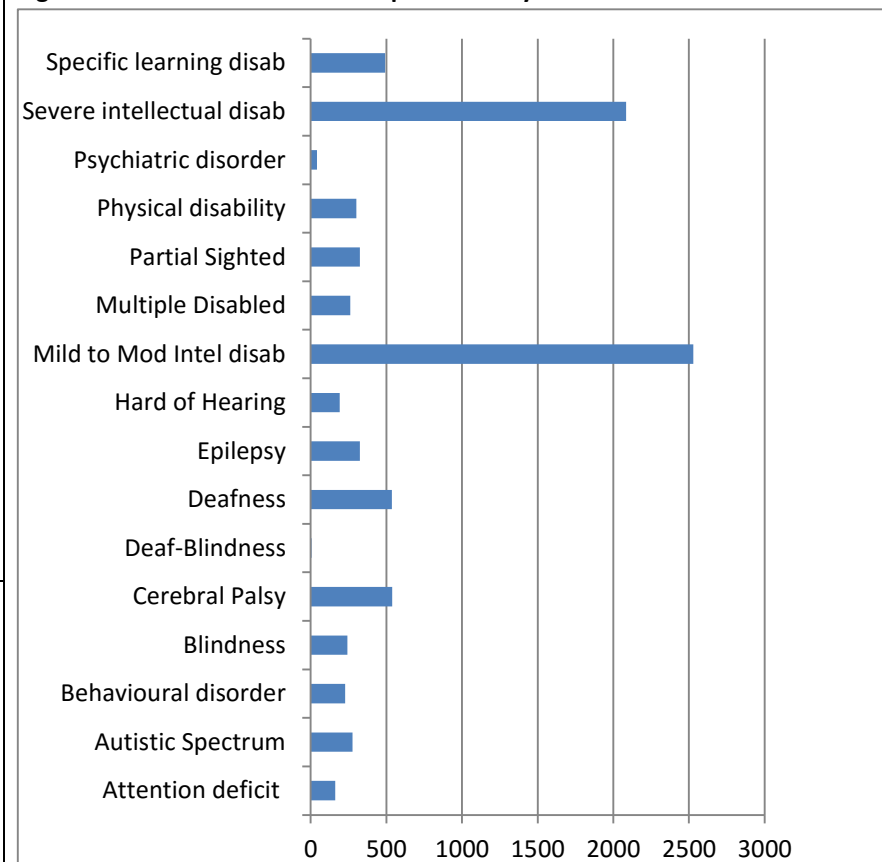


Figure 21 reflects that 29.6 % of SNE learners are mildly to moderate intellectually disabled. 24.4 % are severely intellectually disabled. The disabilities with the lowest enrolment are deaf-blindness and psychiatric disorder. Other disabilities with high enrolments include specific learning disability, deafness and cerebral palsy.

**Contact Details: Provincial EMIS Directorate**

**Information on different sectors of the education system may be requested (preferably by email) from the following members of the Limpopo Department of Education and the directorate:**

**EDUCATION MANAGEMENT INFORMATION SYSTEM (EMIS):**

**Director: EMIS**

Mr. L.F. Ramphele

Limpopo Department of Education

113 Biccard Street

Polokwane, 0699

Tel: 015 290 9421

Email: [RampheleLF@edu.limpopo.gov.za](mailto:RampheleLF@edu.limpopo.gov.za)

**Deputy Chief Education Specialist: EMIS**

Ms. I. Armer (**Queries/Data Dissemination/Narration/Publications/Master list**)

Tel: 015 290 7929

Email: [ArmerI@edu.limpopo.gov.za](mailto:ArmerI@edu.limpopo.gov.za)

**Chief Director: Education Planning**

Mr. M.E. Sekole

Tel: 015 290 8026

Email: [SekoleME@edu.limpopo.gov.za](mailto:SekoleME@edu.limpopo.gov.za)